



REC# #: 752848

RECORDED 5/8/2019 AT 1:20 PM BK# 2620 PG# 1890  
Debra K. Lee, CLERK OF LARAMIE COUNTY, WY PAGE 1 OF 1

# STATE OF WYOMING CORNER RECORD

(In compliance with the CORNER PERPETUATION AND FILING ACT, Wyoming Statutes, 1997 Section 33-29-140, et. seq., and the Rules and Regulations of the Board of Registrations for Professional Engineers and Professional Land Surveyors)

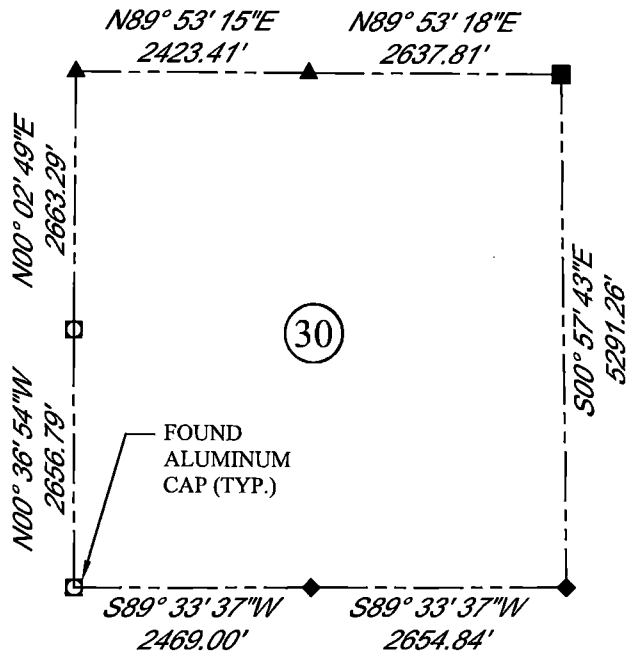
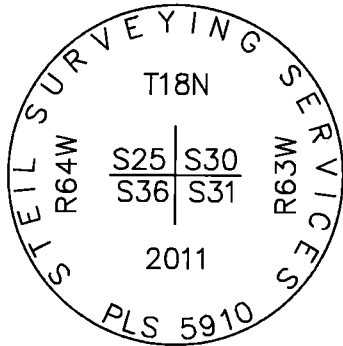
## SOUTH WEST CORNER SECTION 30, T. 18 N., R. 63 W., 6TH P.M., LARAMIE COUNTY, WYOMING

**GLO:** SET A SANDSTONE 20X12X4, 15 IN. DEEP WITH ONE MARK ON THE SOUTH AND 5 ON THE NORTH EDGE FOR CORNER TO SECTIONS 25, 30, 31, AND 36.

**FOUND:** FOUND 3-1/4" A.C., 0.1' ABOVE SURFACE, MARKED AS SHOWN.



SCALE: 1" = 2000'  
NORTH DETERMINED BY  
G.P.S OBSERVATIONS



### LEGEND:

- FOUND BLM CAP
- FOUND USFS CAP
- FOUND STONE
- FOUND PRIVATE MONUMENT
- ◆ CALCULATED POSITION
- ▲ SET MONUMENT (LS10245)
- SECTION LINE

DATE OF FIELD WORK: 08/23/2018 OFFICE REFERENCE: 746049

### CROSS INDEX DIAGRAM

	1	2	3	4	5	6	7	8	9	10	11	12	13	14	15	16	17	18	19	20	21	22	23	24	25	
A																										
B																										
C		6		5		4		3		2		1														
D																										
E																										
F																										
G		7		8		9		10		11		12														
H																										
J																										
K																										
L		18		17		16		15		14		13														
M																										
N																										
O																										
P		19		20		21		22		23		24														
Q																										
R																										
S																										
T		30		29		28		27		26		25														
U																										
V																										
W																										
X		31		32		33		34		35		36														
Y																										
Z																										

WOOD  
2615 AVIATION DRIVE  
SHERIDAN, WY 82801  
PH: 307-675-6400



THIS CORNER RECORD WAS  
PREPARED BY ME OR UNDER  
MY DIRECTION AND  
SUPERVISION,  
SEAL AND SIGNATURE

